

CORPORATE WOODS | BUILDING 11

10875 Benson Drive

Overland Park, Kansas 66210

OFFICE FOR LEASE | 1,505± RSF - 4,805± RSF



RENTABLE BUILDING AREA	20,216 RSF
BASE RENTAL RATE	\$21.00 PRSF
LEASE TYPE	Full Service Gross

BUILDING FEATURES

- Located just off the I-435/Antioch exchange at Indian Creek Parkway/Antioch main entrance to Corporate Woods Office Park
- 4/1,000 RSF parking
- Local ownership
- Google Fiber

SUITES AVAILABLE

Suite 200 - 4,805± RSF

Divisible to 1,505± RSF

FOR MORE INFORMATION, PLEASE CONTACT:

DEBBIE SCHULTE, SIOR

Principal, Office Brokerage

816.936.8549

dschulte@kessingerhunter.com

KESSINGER/HUNTER & COMPANY, LC

2600 Grand Boulevard, Suite 700

Kansas City, MO 64108

816.842.2690

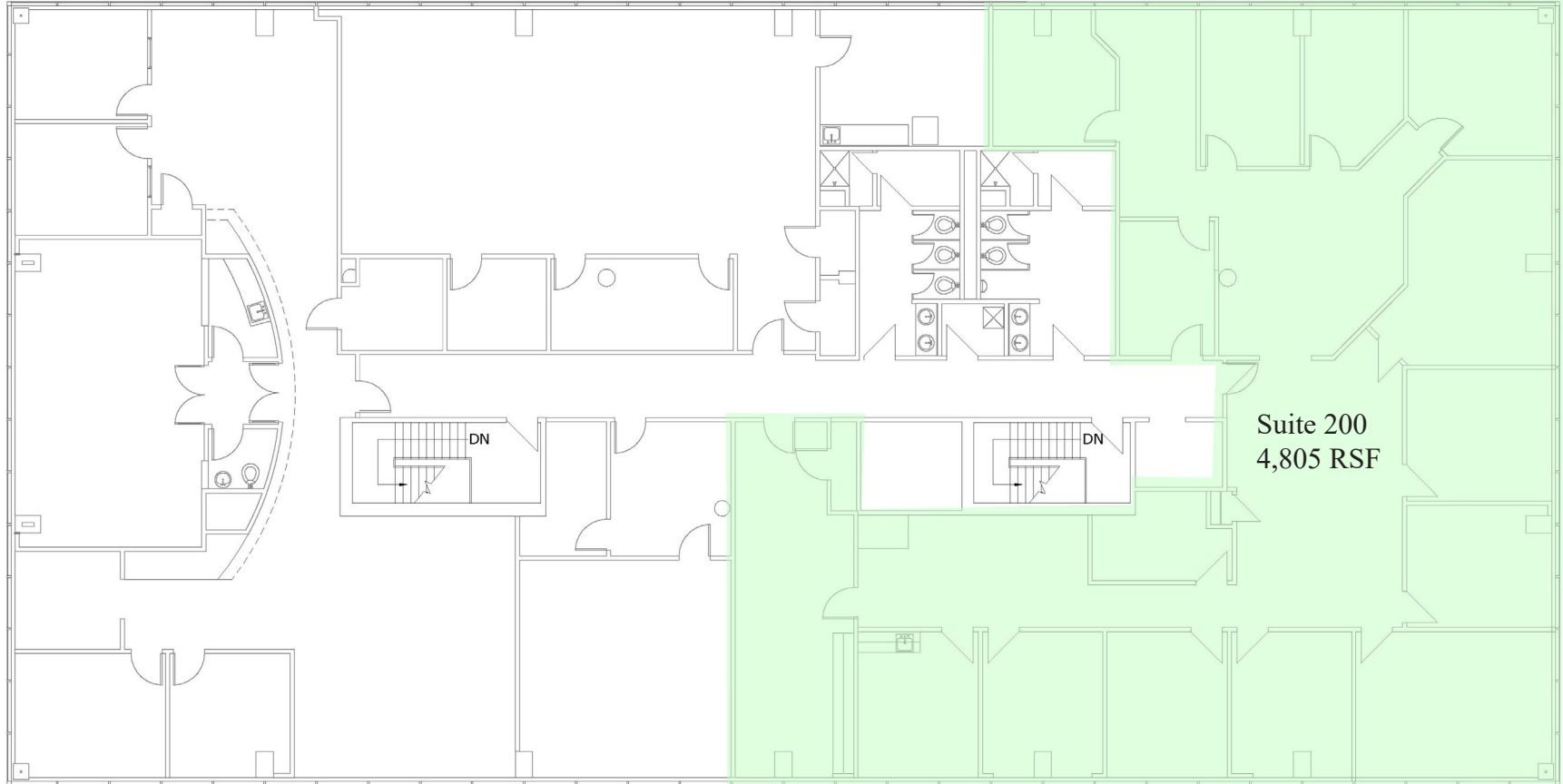
www.kessingerhunter.com

10875 BENSON DRIVE, OVERLAND PARK, KANSAS 66210

Office for Lease | 4,805± RSF



2nd Floor
Suite 200
4,805± SF



FOR MORE INFORMATION, PLEASE CONTACT:

DEBBIE SCHULTE, SIOR
Principal, Office Brokerage
816.936.8549
dschulte@kessingerhunter.com

KESSINGER/HUNTER & COMPANY, LC
2600 Grand Boulevard, Suite 700
Kansas City, MO 64108
(816) 842-2690
www.kessingerhunter.com