

9290 BOND

OVERLAND PARK, KANSAS 66214

OFFICE SPACE FOR LEASE | 584-1,901± SF AVAILABLE

CONGLETON OFFICE BUILDING

PROPERTY FEATURES

- Parking ratio 4/1,000 SF
- Will "turn-key" all availabilities
- Great access and visibility
- Signage available
- Near retail and restaurants
- **Newly renovated restrooms**

ADDITIONAL INFO

TOTAL SIZE	584-1,575± SF
LEASE RATE	\$15.75 PSF Full Service
TIMING	Immediately
SUITES	100 (1,528± SF)
	110 (584± SF)
	202 (1,575± SF)
	205 (1,901± SF)
	211 (1,618± SF)



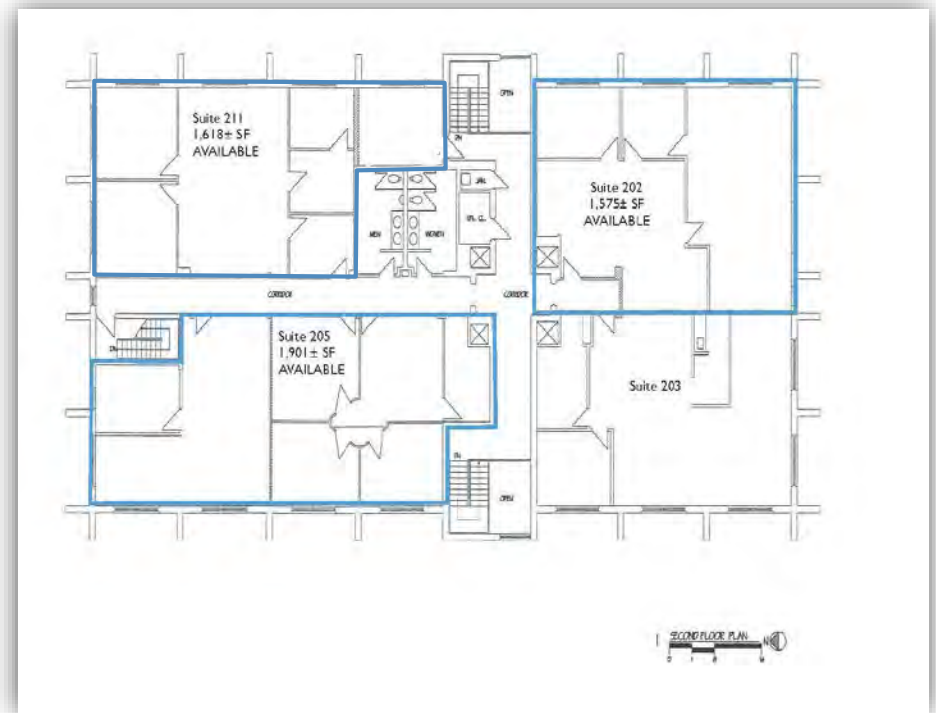
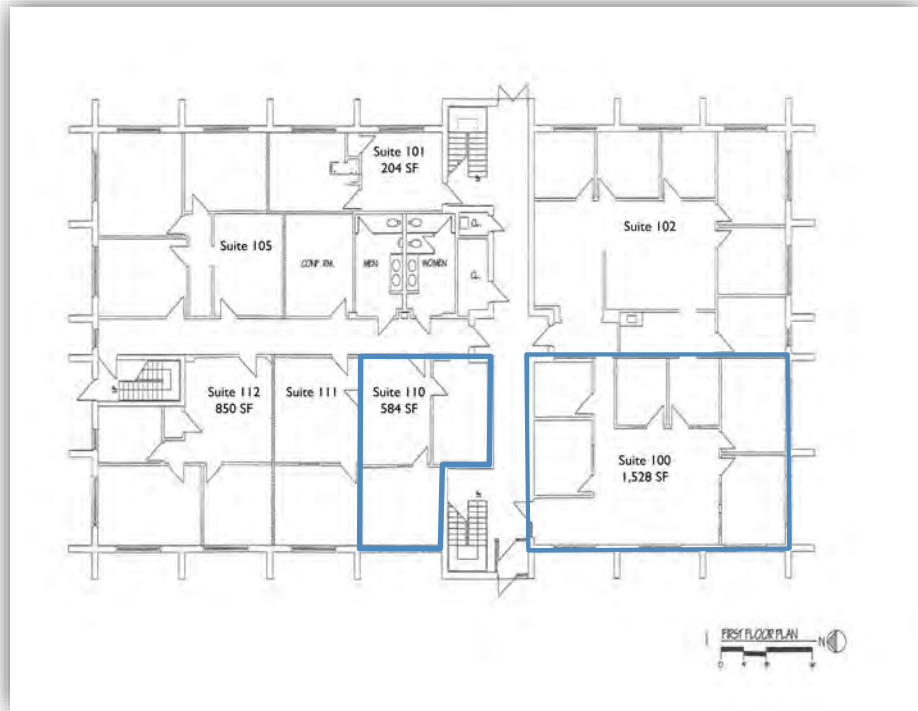
For more information, please contact:

MATTHEW SEVERNS, CCIM
Industrial Brokerage
816.936.8543
mseverns@kessingerhunter.com

KESSINGER/HUNTER & COMPANY, LC
2600 Grand Boulevard, Suite 700
Kansas City, MO 64108
816.842.2690
www.kessingerhunter.com

9290 BOND, OVERLAND PARK, KANSAS 66214

Office Space for Lease



For more information, please contact:

MATTHEW SEVERNS, CCIM
Industrial Brokerage
816.936.8543
mseverns@kessingerhunter.com

KESSINGER/HUNTER & COMPANY, LC
2600 Grand Boulevard, Suite 700
Kansas City, MO 64108
816.842.2690
www.kessingerhunter.com