

9213 CODY

OVERLAND PARK, KANSAS 66214

FLEX OFFICE SPACE FOR LEASE | 6,000± SF

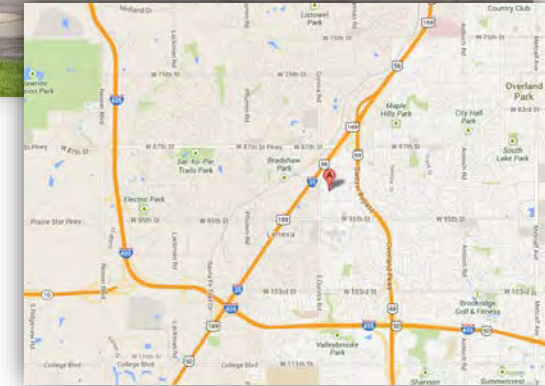
CONGLETON BUSINESS PARK

PROPERTY FEATURES

- Open Office Plan
- Convenient Location
- Ample Parking
- 1 Dock High Door
- 16' Clear Height
- 3-Phase Power

ADDITIONAL INFO

TOTAL SIZE	6,000± SF
OFFICE SPACE	4,400± SF
LEASE RATE	\$5.95 PSF Net
TAXES	\$1.66 PSF
INSURANCE	\$0.10 PSF



For more information, please contact:

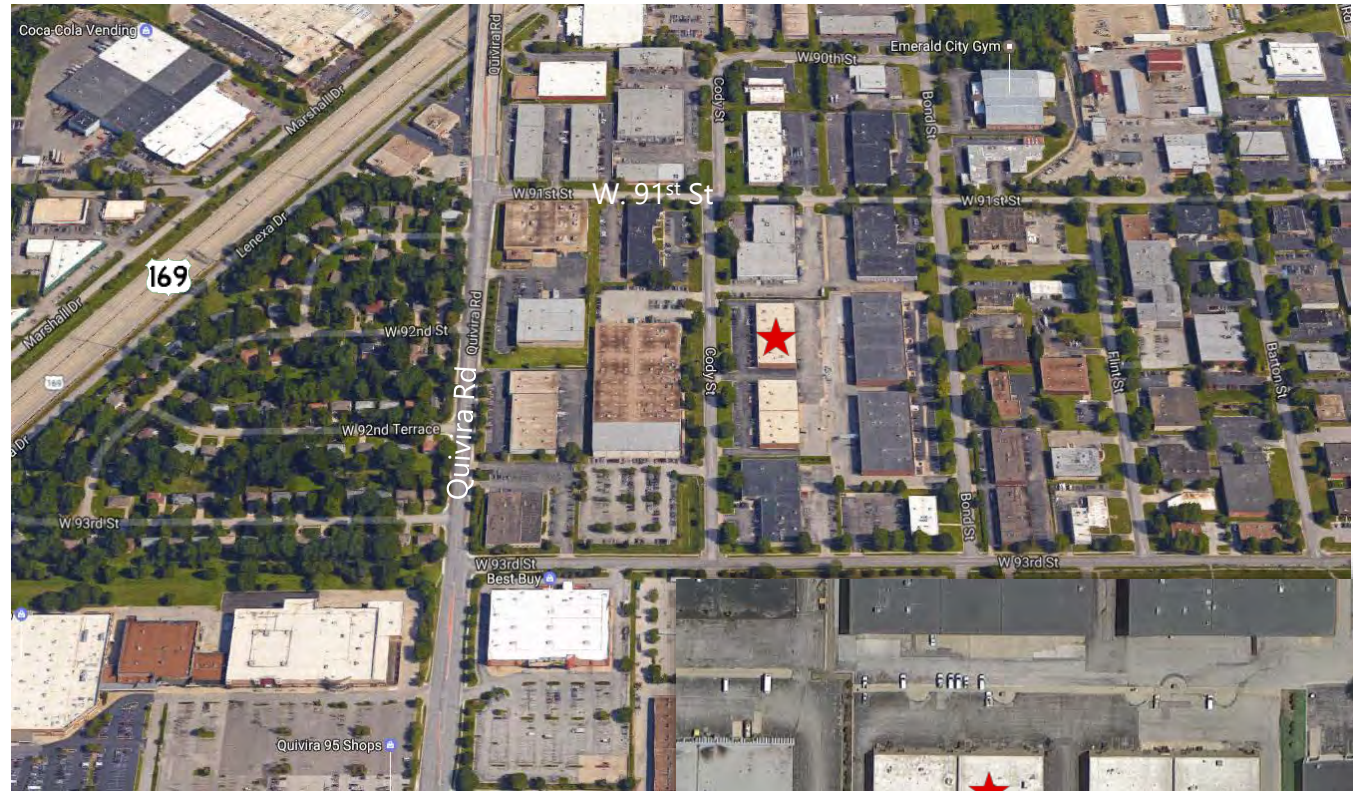
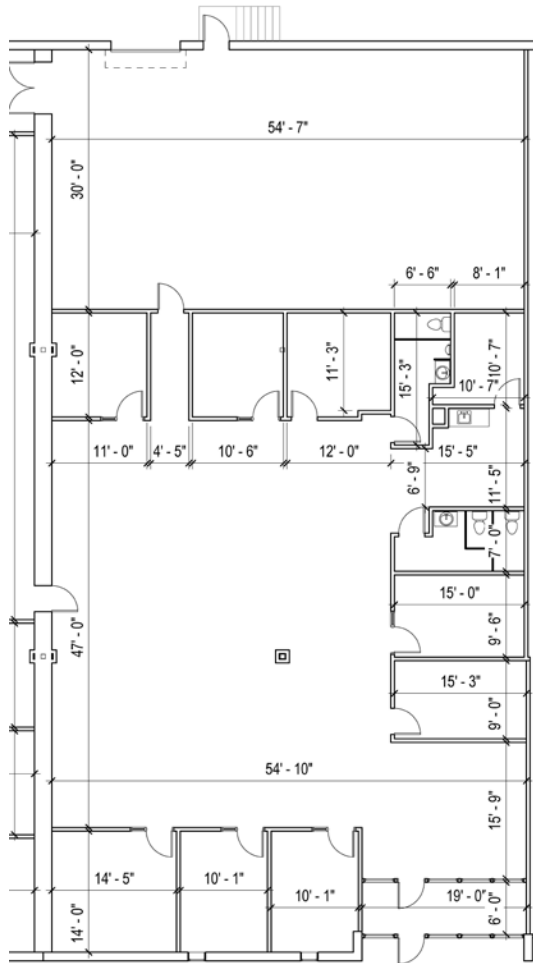
MATTHEW SEVERNS, CCIM
Industrial Brokerage
816.936.8543 direct
mseverns@kessingerhunter.com

PATRICK J. MCGANNON, SIOR
Director of Industrial Brokerage
816.936.8514 direct
pmcgannon@kessingerhunter.com

KESSINGER/HUNTER & COMPANY, LC
2600 Grand Boulevard, Suite 700
Kansas City, MO 64108
816.842.2690
www.kessingerhunter.com

9213 CODY, OVERLAND PARK, KANSAS 66214

Flex Office Space for Lease



For more information, please contact:

MATTHEW SEVERNS, CCIM
Industrial Brokerage
816.936.8543 direct
mseverns@kessingerhunter.com

PATRICK J. MCGANNON, SIOR
Director of Industrial Brokerage
816.936.8514 direct
pmcgannon@kessingerhunter.com

KESSINGER/HUNTER & COMPANY, LC
2600 Grand Boulevard, Suite 700
Kansas City, MO 64108
816.842.2690
www.kessingerhunter.com