

9204 BOND

OVERLAND PARK, KANSAS 66214

FLEX SPACE FOR LEASE | 5,640± SF

CONGLETON BUSINESS PARK

PROPERTY FEATURES

- 5,640± SF
- 4,700± SF Office Space
- 1 Dock-High Door
- Great Access to I-35
- 18' Clear Height
- Large Open Production Area

ADDITIONAL INFO

TOTAL SIZE	5,640± SF
OFFICE SPACE	4,700± SF
LEASE RATE	\$6.75 PSF Net
TAXES	\$1.44 PSF
INSURANCE	\$0.10 PSF
COMMON AREA MAINTENANCE	\$0.76 PSF



For more information, please contact:

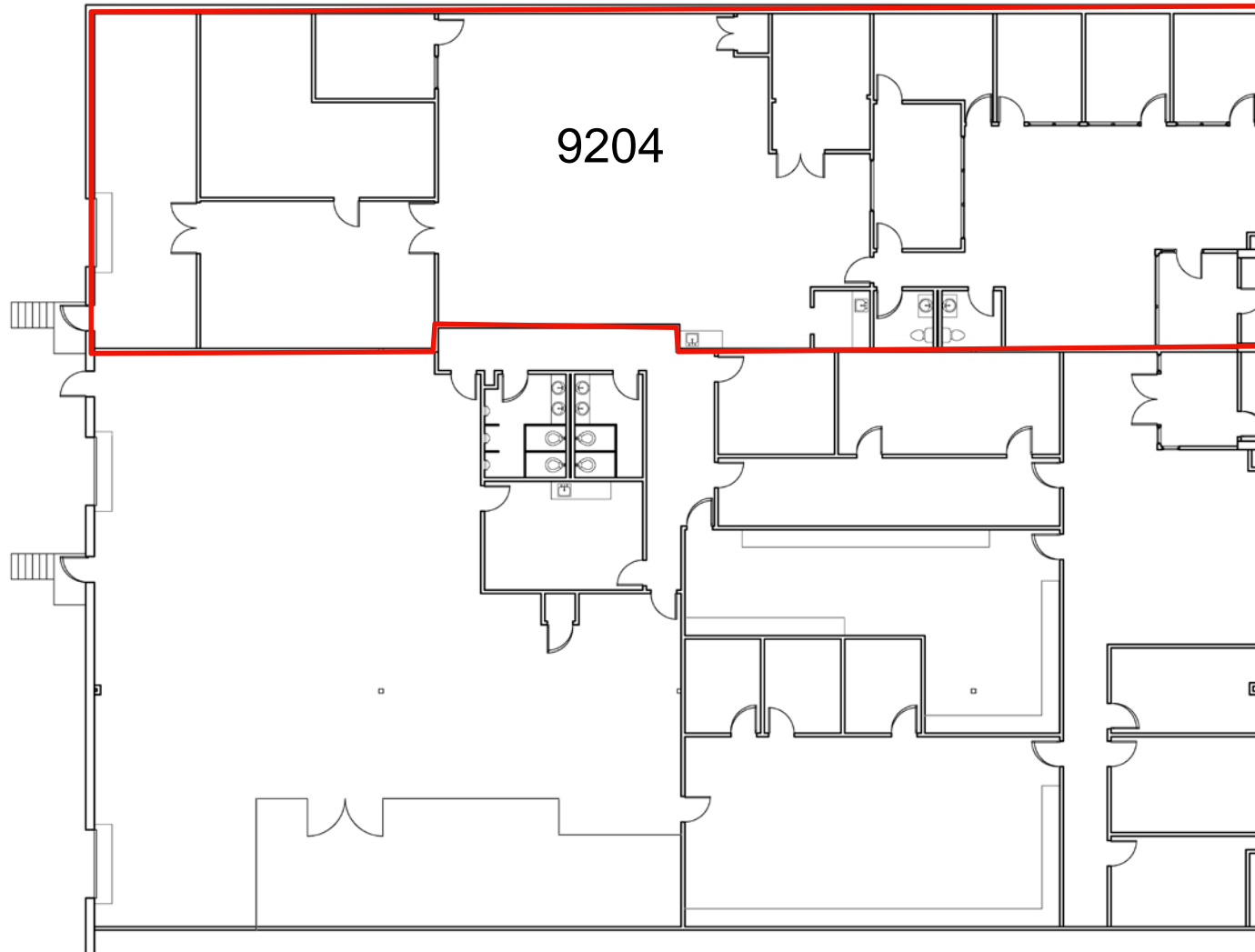
MATTHEW SEVERNS, CCIM
Industrial Brokerage
816.936.8543 direct
mseverns@kessingerhunter.com

PATRICK J. MCGANNON, SIOR
Director of Industrial Brokerage
816.936.8514 direct
pmcgannon@kessingerhunter.com

KESSINGER/HUNTER & COMPANY, LC
2600 Grand Boulevard, Suite 700
Kansas City, MO 64108
816.842.2690
www.kessingerhunter.com

9204 BOND, OVERLAND PARK, KANSAS 66214

Flex Space for Lease



For more information, please contact:

MATTHEW SEVERNS, CCIM
Industrial Brokerage
816.936.8543 direct
mseverns@kessingerhunter.com

PATRICK J. MCGANNON, SIOR
Director of Industrial Brokerage
816.936.8514 direct
pmcgannon@kessingerhunter.com

KESSINGER/HUNTER & COMPANY, LC
2600 Grand Boulevard, Suite 700
Kansas City, MO 64108
816.842.2690
www.kessingerhunter.com