

PRAIRIE STAR MEDICAL OFFICE BUILDING II
6850 HILLTOP
SHAWNEE, KANSAS 66226
MEDICAL/OFFICE FOR LEASE | 2,508± RSF AVAILABLE



BUILDING FEATURES

RENTABLE BUILDING AREA	24,749± RSF
BASE RENTAL RATE	\$28.00 PRSF
LEASE TYPE	Full Service Gross

SPACE AVAILABLE

Suite 165: 2,508± RSF

PROPERTY FEATURES

- Built in 2005
- Medical/Office space
- Located near the southeast corner of Midland and K-7 Highway
- Ample parking



For more information, please contact:

DEBBIE SCHULTE, SIOR
Principal, Office Brokerage
816.936.8549
dschulte@kessingerhunter.com

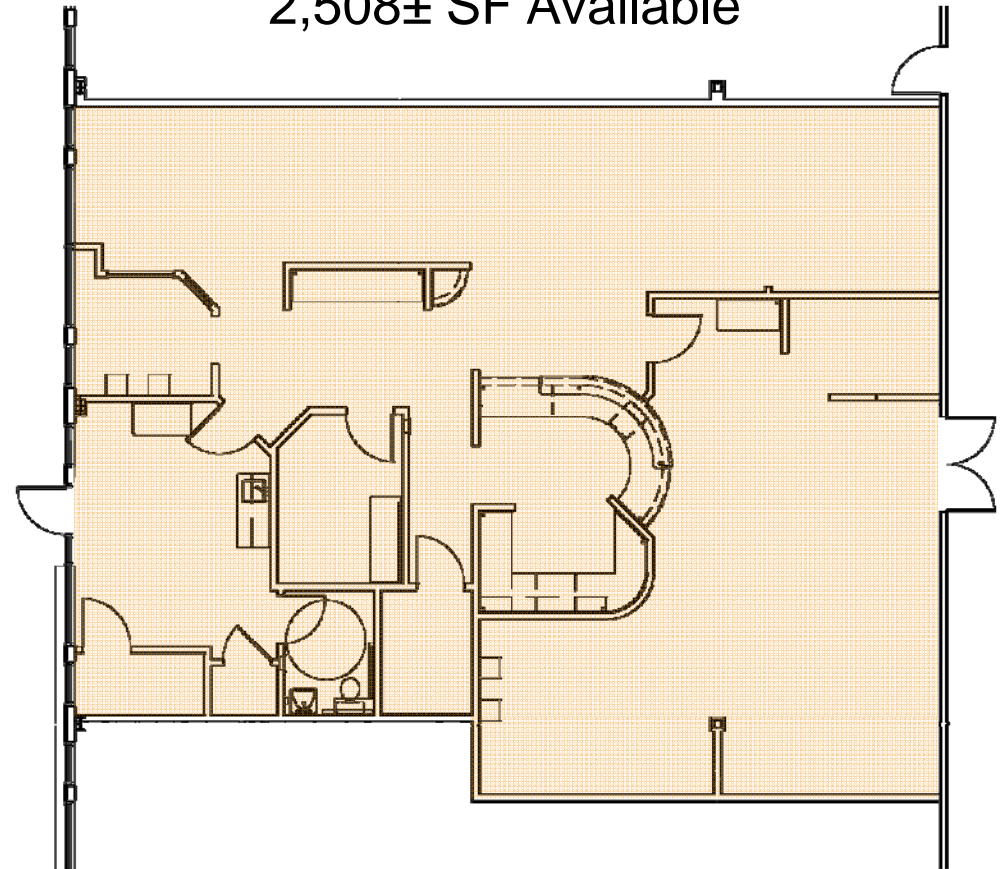
KESSINGER/HUNTER & COMPANY, LC
2600 Grand Boulevard, Suite 700
Kansas City, MO 64108
816.842.2690
kessingerhunter.com

PRAIRIE STAR MEDICAL OFFICE BUILDING II 6850 HILLTOP, SHAWNEE, KANSAS 66226

Medical/Office for Lease | 2,508± RSF



2,508± SF Available



For more information, please contact:

DEBBIE SCHULTE, SIOR
Principal, Office Brokerage
816.936.8549
dschulte@kessingerhunter.com

KESSINGER/HUNTER & COMPANY, LC
2600 Grand Boulevard, Suite 700
Kansas City, MO 64108
816.842.2690
kessingerhunter.com