

5240 BELINDER ROAD  
FAIRWAY, KANSAS 66205

RETAIL & OFFICE | 9,715± SF AVAILABLE



## CHURCHILL BUILDING



### PROPERTY FEATURES

- Sale price - \$1,595,000
- Rare Fairway location – near Houlihan’s, Hen House, Rainy Day Books, and First Watch
- 10,250 SF lot, 9,715 SF building (includes 1,390 SF basement)
- Pole signage
- Across from Bloch Cancer Care Pavilion in the University of Kansas Cancer Center
- Office, residential, retail, and storage opportunities
- 9 exclusive parking spaces, in addition to 50+ non-exclusive parking spaces available



For more information, please contact:

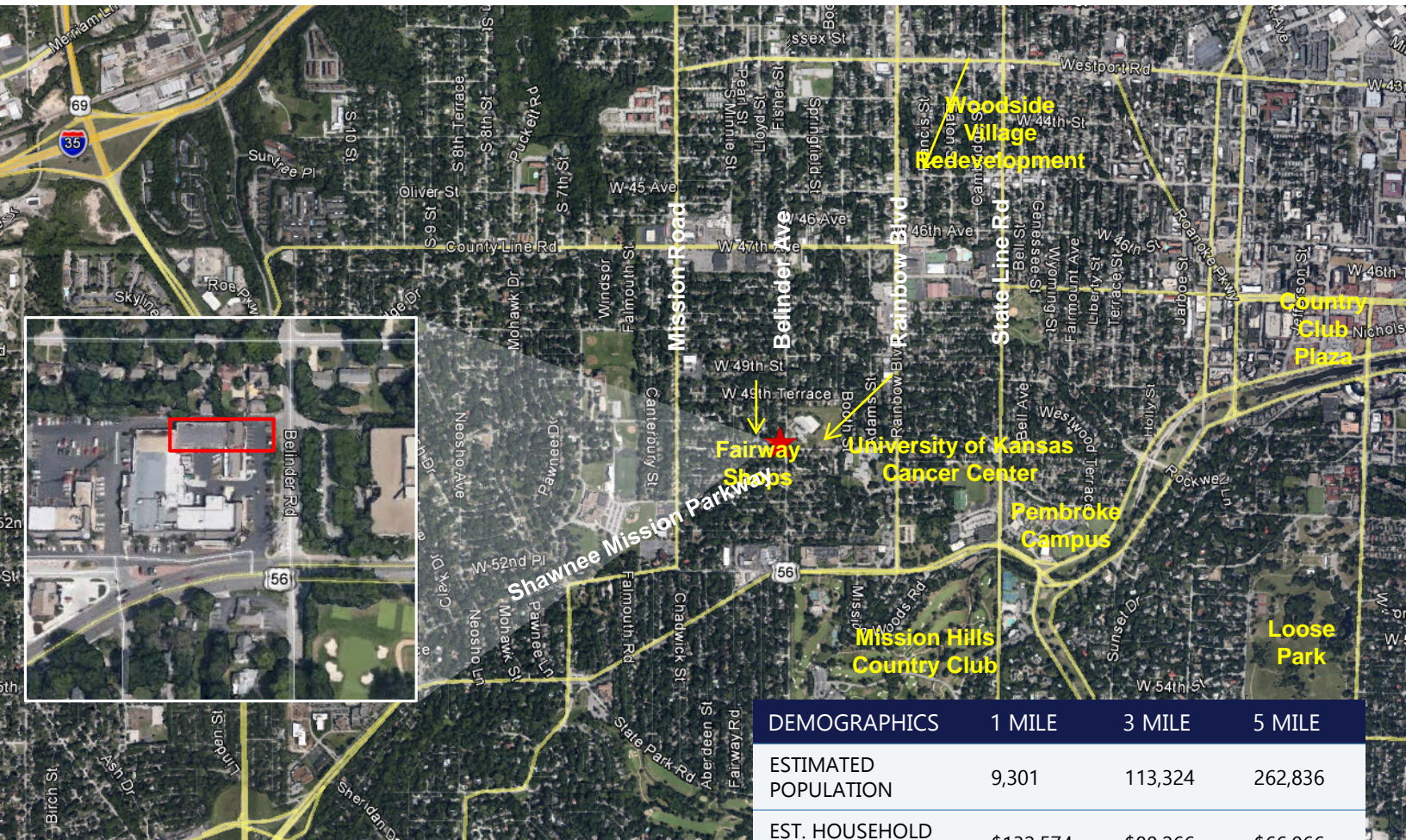
**MICHAEL WATSON**  
Industrial Brokerage  
816.936.8533  
[mwatson@kessingerhunter.com](mailto:mwatson@kessingerhunter.com)

**KESSINGER/HUNTER & COMPANY, LC**  
2600 Grand Boulevard, Suite 700  
Kansas City, MO 64108  
816.842.2690  
[www.kessingerhunter.com](http://www.kessingerhunter.com)



# 5240 BELINDER ROAD, FAIRWAY, KANSAS 66205

Retail & Office Available



For more information, please contact:

**MICHAEL WATSON**  
 Industrial Brokerage  
 816.936.8533  
[mwatson@kessingerhunter.com](mailto:mwatson@kessingerhunter.com)

**KESSINGER/HUNTER & COMPANY, LC**  
 2600 Grand Boulevard, Suite 700  
 Kansas City, MO 64108  
 816.842.2690  
[www.kessingerhunter.com](http://www.kessingerhunter.com)

Information subject to verification and no liability for errors or omissions is assumed. Price subject to change.  
 To unsubscribe, please click on the link: [khlistings@kessingerhunter.com](mailto:khlistings@kessingerhunter.com)