

SOUTHWEST CORNER OF 167TH & 169 HIGHWAY

20025 W. 167TH STREET | OLATHE, KANSAS 66062

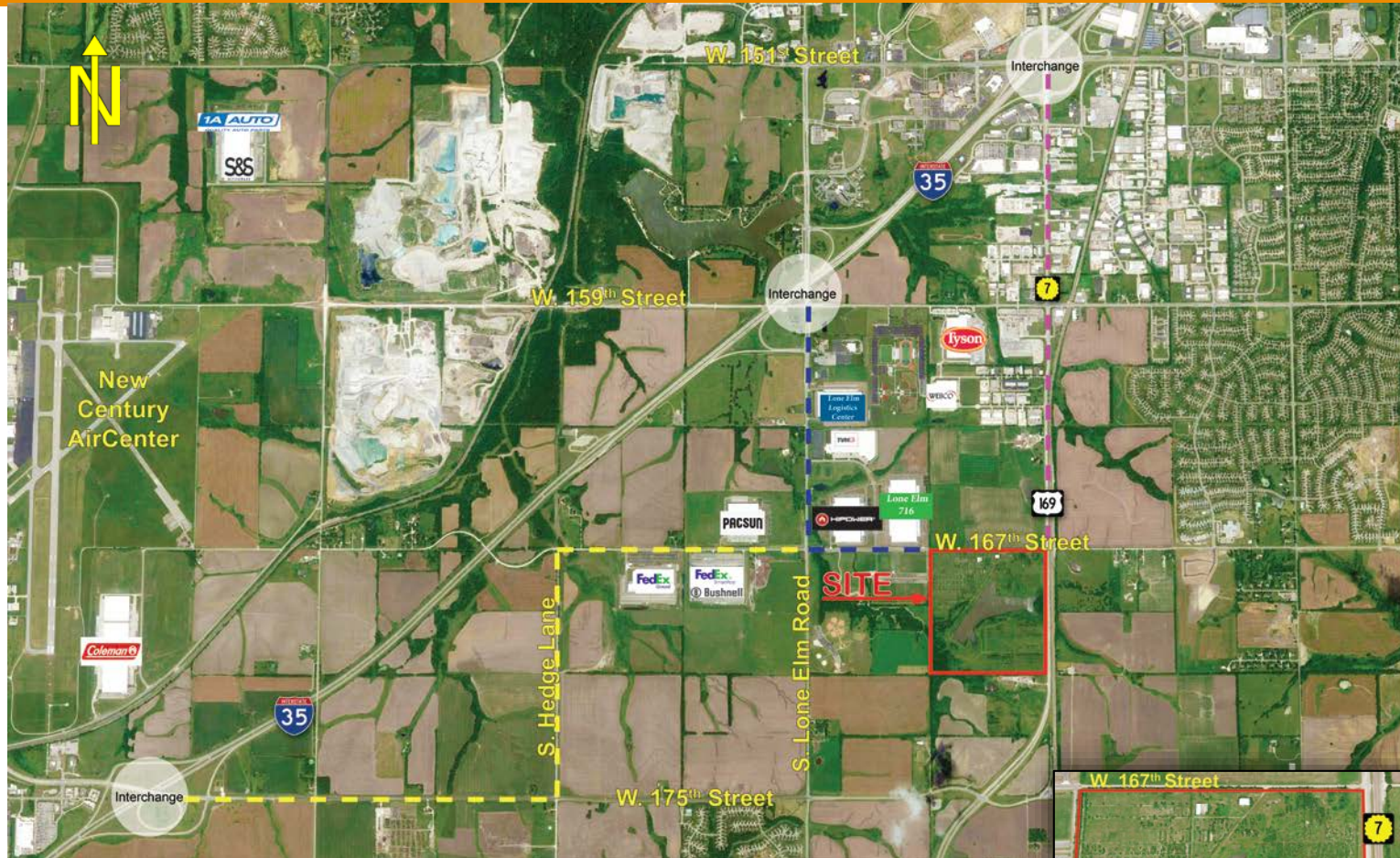
LAND FOR SALE | 151± ACRES

FEATURES

- All utilities to-site
- Development opportunities for mixed-use, retail, flex, bulk distribution/industrial, and **residential**
- 2,616 feet of 169 Highway frontage
- Situated on highway corner

PROXIMITY

- BNSF Intermodal 9.5 miles
- 2 Miles to 151st Street Interchange
- 2 Miles to 159th Street Interchange
- 4.5 Miles to 175th Street Interchange



LAND FEATURES

ACRES	151± Acres
SALE PRICE	\$4,275,000 (\$.65 PSF)
ZONING	AG Olathe Comp Plan Employment District (site yields to a variety of uses)
2017 TAXES	\$4,253.47

For more information, please contact:

WALLY RIST
Industrial Brokerage & Land Sales
816.536.3509 cell
wrist@kessingerhunter.com

MICHAEL WATSON
Principal, Industrial Brokerage & Land Sales
816.936.8533 direct
mwatson@kessingerhunter.com

KESSINGER/HUNTER & COMPANY, LC
2600 Grand Boulevard, Suite 700
Kansas City, MO 64108
816.842.2690
www.kessingerhunter.com



SOUTHWEST CORNER OF 167TH & 169 HIGHWAY

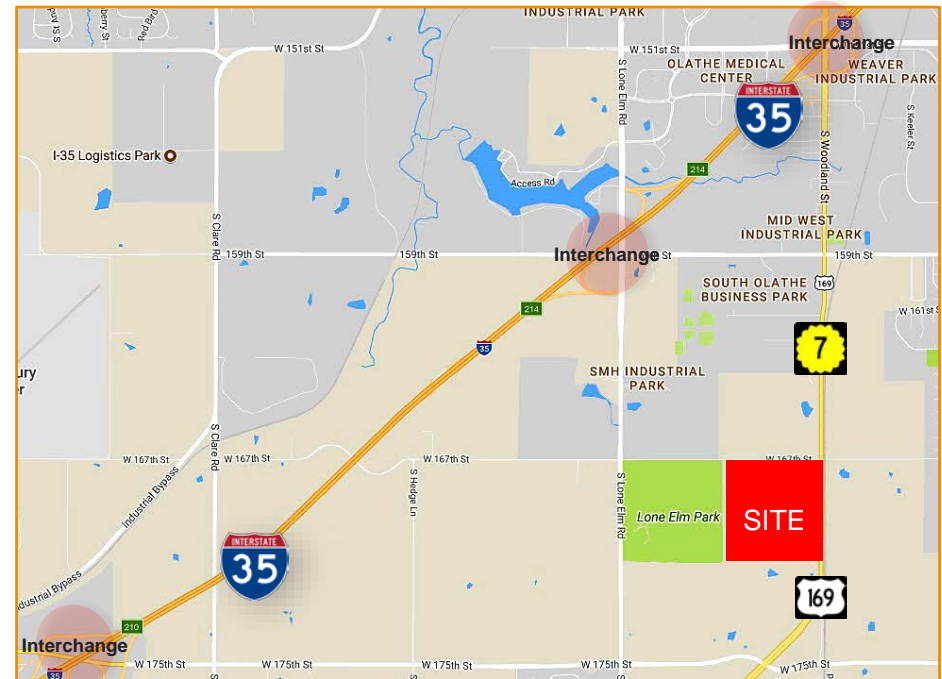
20025 W. 167TH STREET | OLATHE, KANSAS 66062

LAND FOR SALE | 151± ACRES



COMMERCIAL CONCEPT PLAN

W. 167th Street



For more information, please contact:

WALLY RIST
Industrial Brokerage & Land Sales
816.536.3509 cell
wrist@kessingerhunter.com

MICHAEL WATSON
Principal, Industrial Brokerage & Land Sales
816.936.8533 direct
mwatson@kessingerhunter.com