

# 16080 S. MUR-LEN ROAD OLATHE, KANSAS 66062

LAND FOR SALE | 12± ACRES

## PROPERTY FEATURES

- South of the intersection of 159<sup>th</sup> Street and Mur-Len
  - Terrific development site with great commercial potential
  - Next to Price Chopper, retail shops, and restaurants
  - Just north of new subdivisions and booming Olathe growth
- Traffic counts: 8,000+ CPD @ S. Mur-Len Road & 159<sup>th</sup> Street
- 357' frontage on Mur-Len Road
- All utilities to site (sewer runs through site)
- Curb/gutter/sidewalk, electricity, gas, sewer, streets, water
- Ideal for apartments, senior living, townhomes, office, etc.

### ADDITIONAL INFO

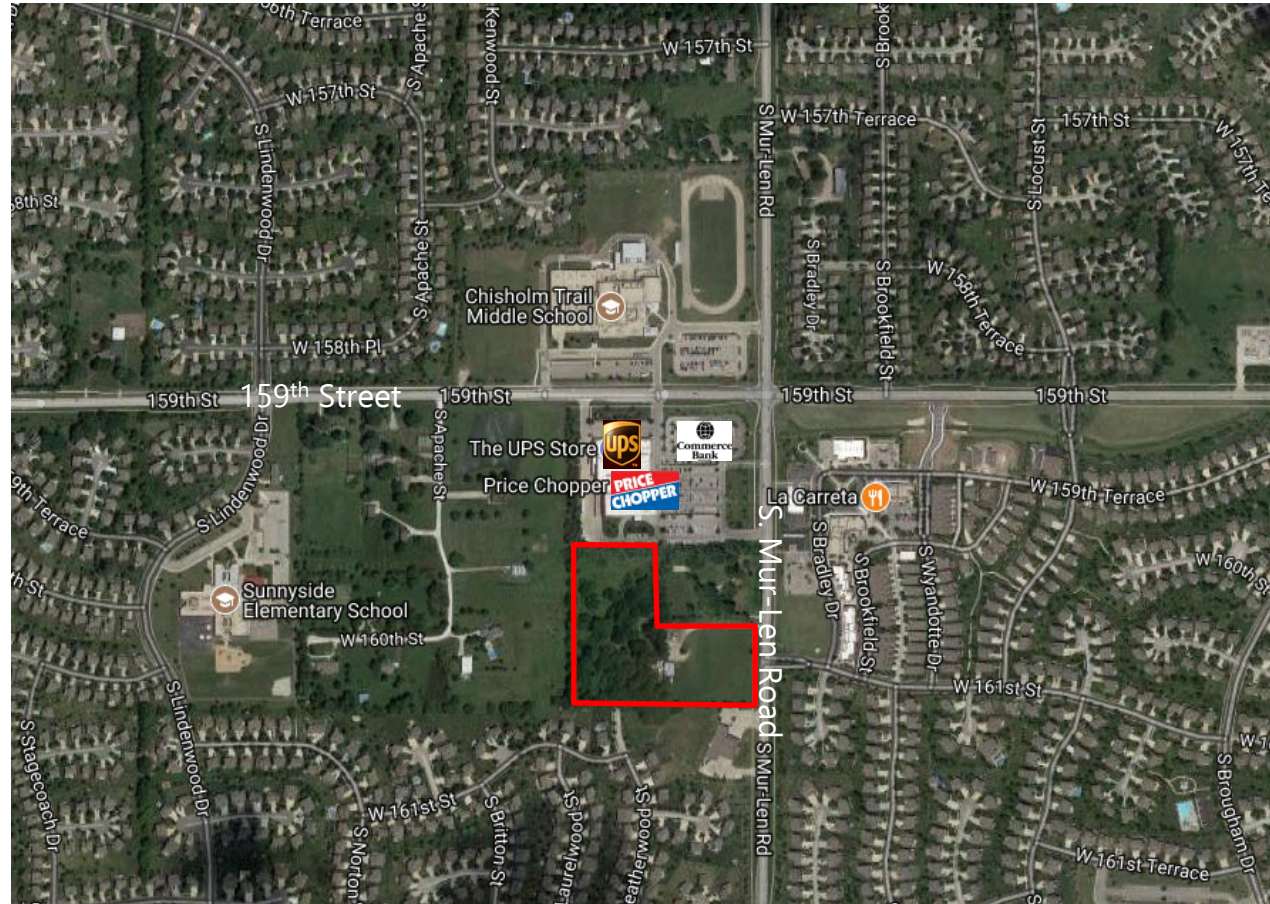
SALES PRICE \$2,400,000 (\$4.59/SF)

SIZE 12± Acres

ZONING Agricultural (Olathe Comprehensive Plan: Mixed Density Residential Neighborhood)

PARCEL ID 6F241418-3010

TAXES (2016) \$4,653 or \$0.01/SF



For more information, please contact:

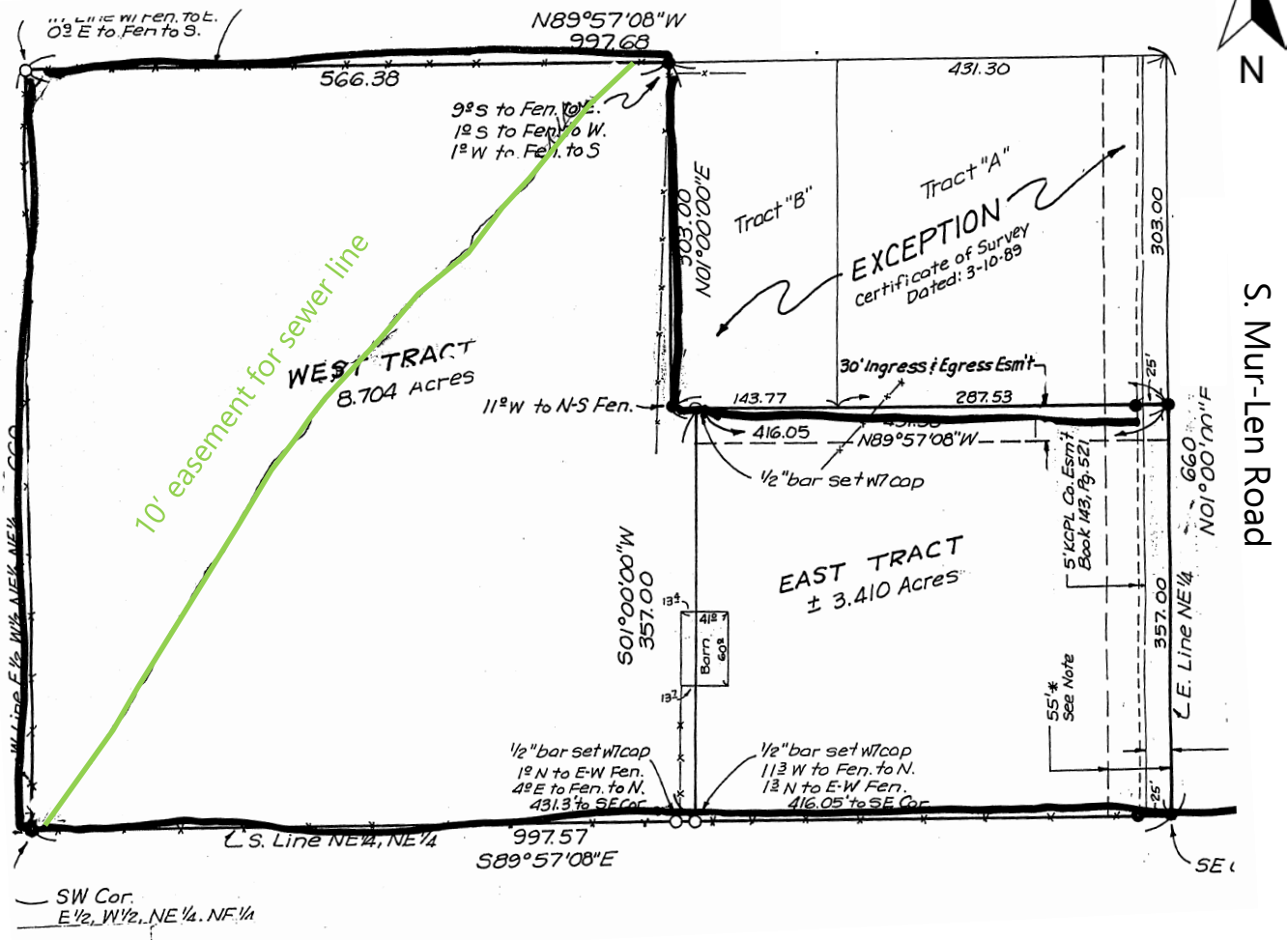
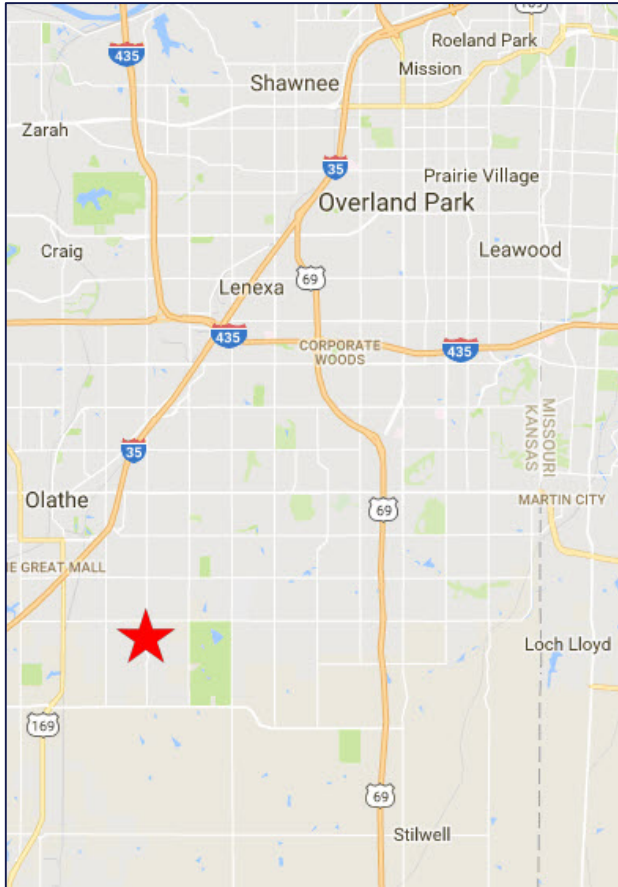
**LEONARD POPPLEWELL**  
Commercial Brokerage  
913.709.3623 mobile  
[lpopplewell@kessingerhunter.com](mailto:lpopplewell@kessingerhunter.com)

**SHER BLANDFORD**  
Commercial Brokerage  
816.936.8525 direct  
[sblandford@kessingerhunter.com](mailto:sblandford@kessingerhunter.com)

**KESSINGER/HUNTER & COMPANY, LC**  
2600 Grand Boulevard, Suite 700  
Kansas City, MO 64108  
816.842.2690  
[www.kessingerhunter.com](http://www.kessingerhunter.com)

# 16080 S. MUR-LEN ROAD, OLATHE, KANSAS 66062

Land for Sale



For more information, please contact:

**LEONARD POPPLEWELL**  
Commercial Brokerage  
913.709.3623 mobile  
[lpopplewell@kessingerhunter.com](mailto:lpopplewell@kessingerhunter.com)

**SHER BLANDFORD**  
Commercial Brokerage  
816.936.8525 direct  
[sblandford@kessingerhunter.com](mailto:sblandford@kessingerhunter.com)

**KESSINGER/HUNTER & COMPANY, LC**  
2600 Grand Boulevard, Suite 700  
Kansas City, MO 64108  
816.842.2690  
[www.kessingerhunter.com](http://www.kessingerhunter.com)