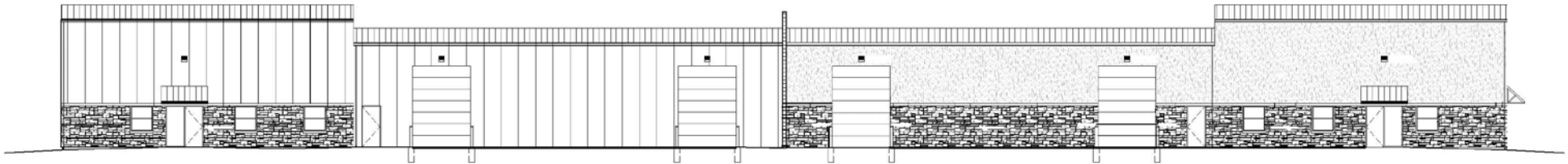


15450 S. KEELER STREET  
OLATHE, KS 66062

BRAND NEW INDUSTRIAL BUILDING FOR LEASE | 7,500± SF



## PROPERTY FEATURES

- 1 Dock-High Door (10' x 10')
- 2 Drive-In Doors (10' x 14')
- Clear Span Warehouse
- 18' Clear Height
- Excellent Highway Access to I-35
- Potential for Outside Storage
- Delivery Expected Spring 2018

### ADDITIONAL INFO

PREMISES	7,500± SF
LEASE RATE	\$8.00 PSF Gross Industrial
OFFICE	Build-to-Suit

For more information, please contact:

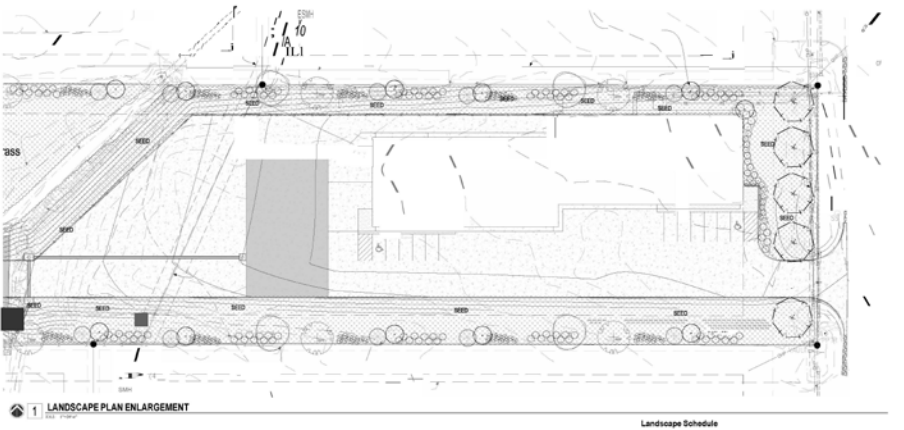
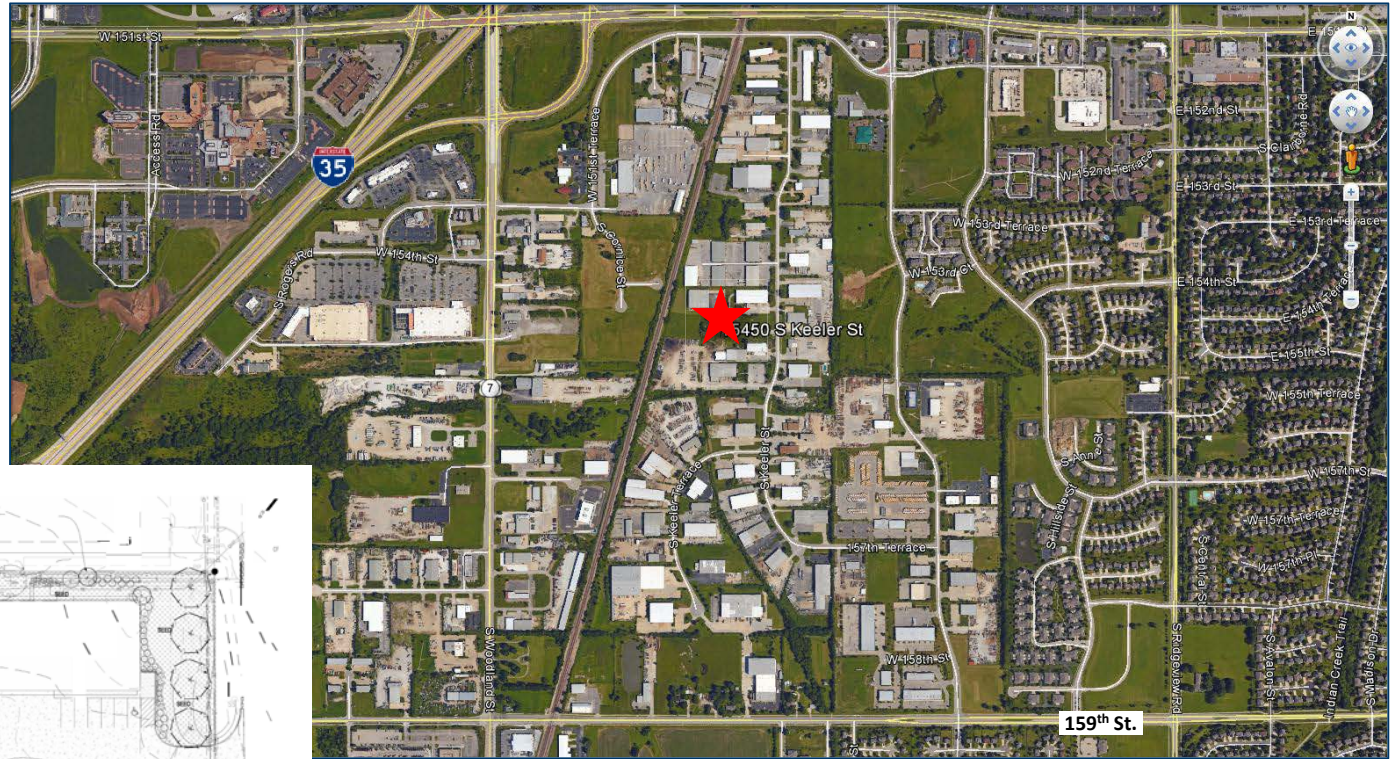
**KURT JENSEN**  
Industrial Brokerage  
816.936.8508 direct  
[kjensen@kessingerhunter.com](mailto:kjensen@kessingerhunter.com)

**KESSINGER/HUNTER & COMPANY, LC**  
2600 Grand Boulevard, Suite 700  
Kansas City, MO 64108  
816.842.2690  
[www.kessingerhunter.com](http://www.kessingerhunter.com)

# 15450 S. KEELER STREET | OLATHE, KS 66062

Industrial for Lease

## SITE PLAN



For more information, please contact:

**KURT JENSEN**  
Industrial Brokerage  
816.936.8508 direct  
[kjensen@kessingerhunter.com](mailto:kjensen@kessingerhunter.com)

**KESSINGER/HUNTER & COMPANY, LC**  
2600 Grand Boulevard, Suite 700  
Kansas City, MO 64108  
816.842.2690  
[www.kessingerhunter.com](http://www.kessingerhunter.com)