

# 14611 PROSPECT AVENUE

## KANSAS CITY, MISSOURI 64132

LAND FOR SALE | 42.4451 ACRES - WILL DIVIDE



# Kessinger Hunter

COMMERCIAL REAL ESTATE  
INDEPENDENTLY OWNED AND OPERATED

### GREAT LOCATION



### PROPERTY FEATURES

- Sale Price: \$1,499,000 (\$35,300/acre)
- Will Divide
- Near 150 Highway & I-49 Exchange
- Proximity of New Honeywell Campus and KCS Intermodal
- Zoning: M2-2 Manufacturing & R-2 Residential
- Possible KCS Rail Served

For more information, please contact:

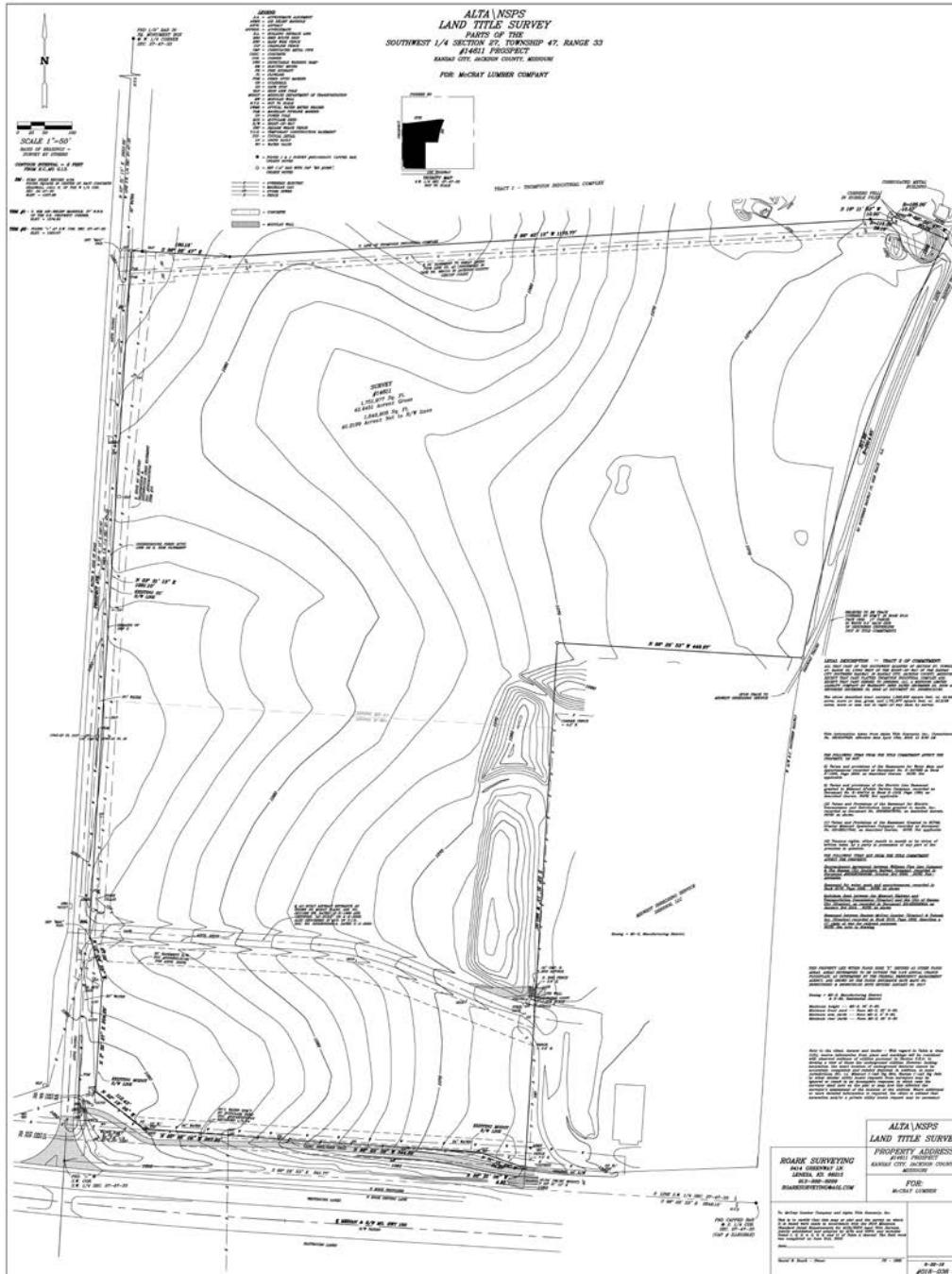
**PATRICK J. MCGANNON, SIOR**  
Director of Industrial Brokerage  
816.936.8514  
[pmcgannon@kessingerhunter.com](mailto:pmcgannon@kessingerhunter.com)

**KESSINGER/HUNTER & COMPANY, LC**  
2600 Grand Boulevard, Suite 700  
Kansas City, MO 64108  
816.842.2690  
[www.kessingerhunter.com](http://www.kessingerhunter.com)

Information subject to verification and no liability for errors or omissions is assumed. Price subject to change. Updated 8/7/18.  
To unsubscribe, please click on the link: [khlistings@kessingerhunter.com](mailto:khlistings@kessingerhunter.com)

# 14611 PROSPECT AVENUE, KANSAS CITY, MISSOURI 64132

Land for Sale



For more information, please contact:

**PATRICK J. MCGANNON, SIOR**  
Director of Industrial Brokerage  
816.936.8514  
[pmcgannon@kessingerhunter.com](mailto:pmcgannon@kessingerhunter.com)

**KESSINGER/HUNTER & COMPANY, LC**  
2600 Grand Boulevard, Suite 700  
Kansas City, MO 64108  
816.842.2690  
[www.kessingerhunter.com](http://www.kessingerhunter.com)