

12310 W. 62ND TERRACE
SHAWNEE, KANSAS 66216



OFFICE/FLEX FOR SALE | 6,200± SF AVAILABLE



PROPERTY FEATURES

- Located along thriving Shawnee Mission Parkway corridor
- Adjacent to 10 Quivira Plaza
- Office/flex building for sale
- Existing storage area
- Drive-in door easily added
- 20 striped spaces
- Built in 1984

ADDITIONAL INFO

TOTAL SIZE	6,200± SF (on two levels)
SALES PRICE	\$650,000
TAXES (2017)	\$13,652.30
AVAILABLE	February 1, 2018

For more information, please contact:

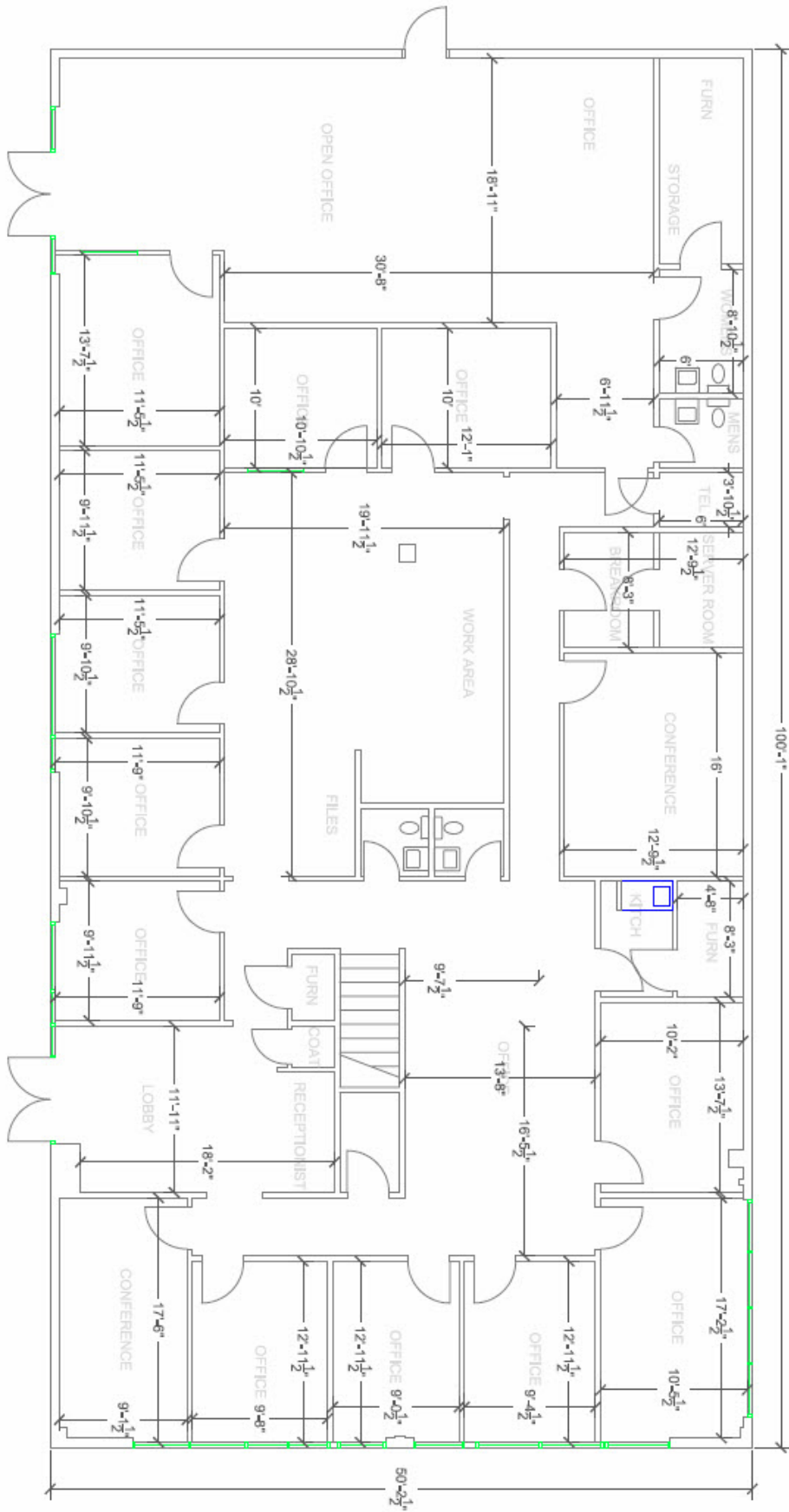
MATTHEW SEVERNS, SIOR, CCIM
Industrial Brokerage
816.936.8543
mseverns@kessingerhunter.com

KESSINGER/HUNTER & COMPANY, LC
2600 Grand Boulevard, Suite 700
Kansas City, MO 64108
816.842.2690
www.kessingerhunter.com

Information subject to verification and no liability for errors or omissions is assumed. Price subject to change. Updated 12/7/17.
To unsubscribe, please click on the link: khlistings@kessingerhunter.com

12310 W. 62nd TERRACE, SHAWNEE, KANSAS 66216

OFFICE/FLEX FOR SALE



1 NEW BUILDING-PLAN VIEW
SCALE: 1/4"=1'-0"

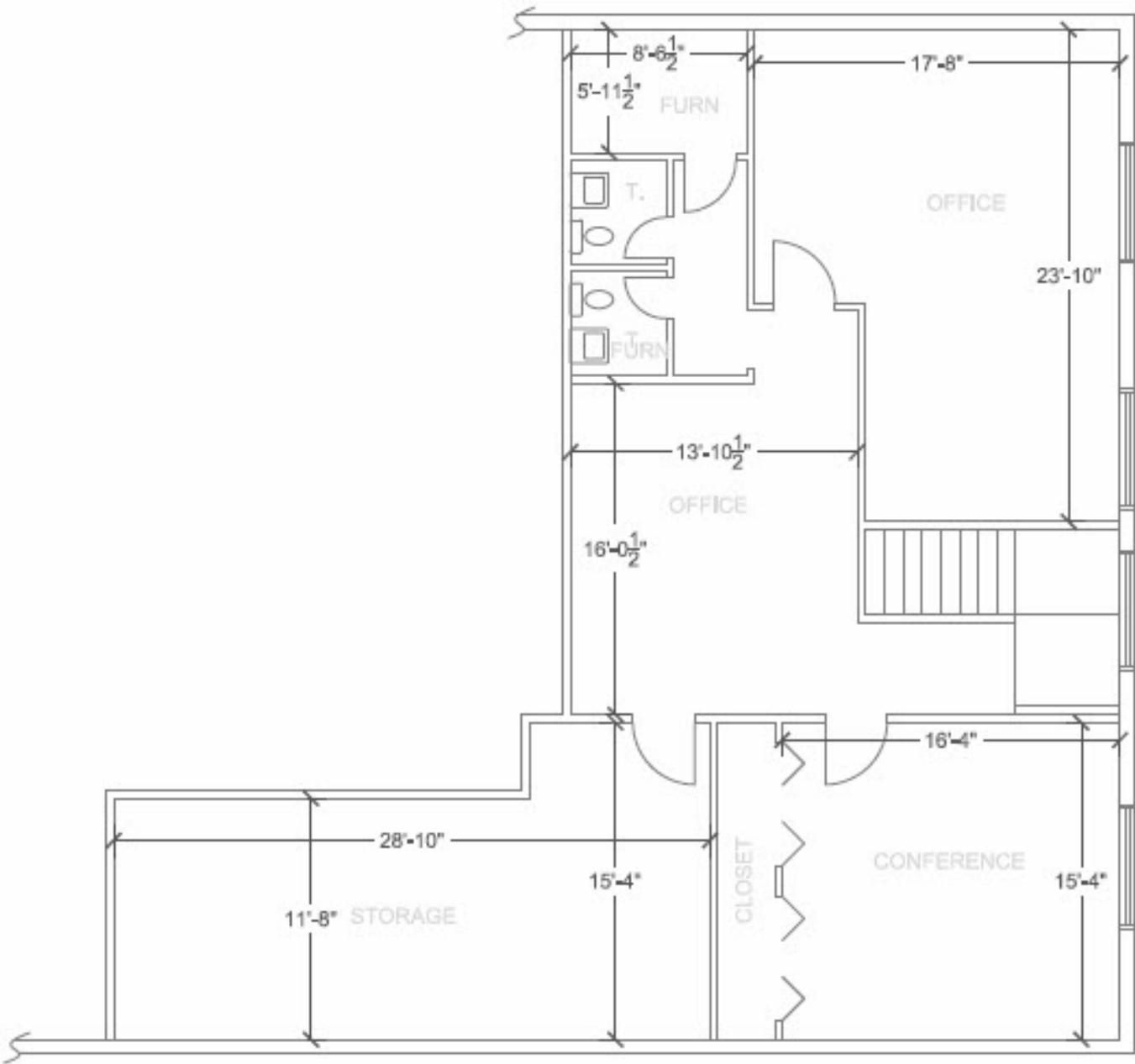


12310 W. 62nd TERRACE, SHAWNEE, KANSAS 66216

OFFICE/FLEX FOR SALE



EST. 1879



1 NEW BUILDING 2ND FLR-PLAN VIEW
SCALE: 1/4"=1'-0"

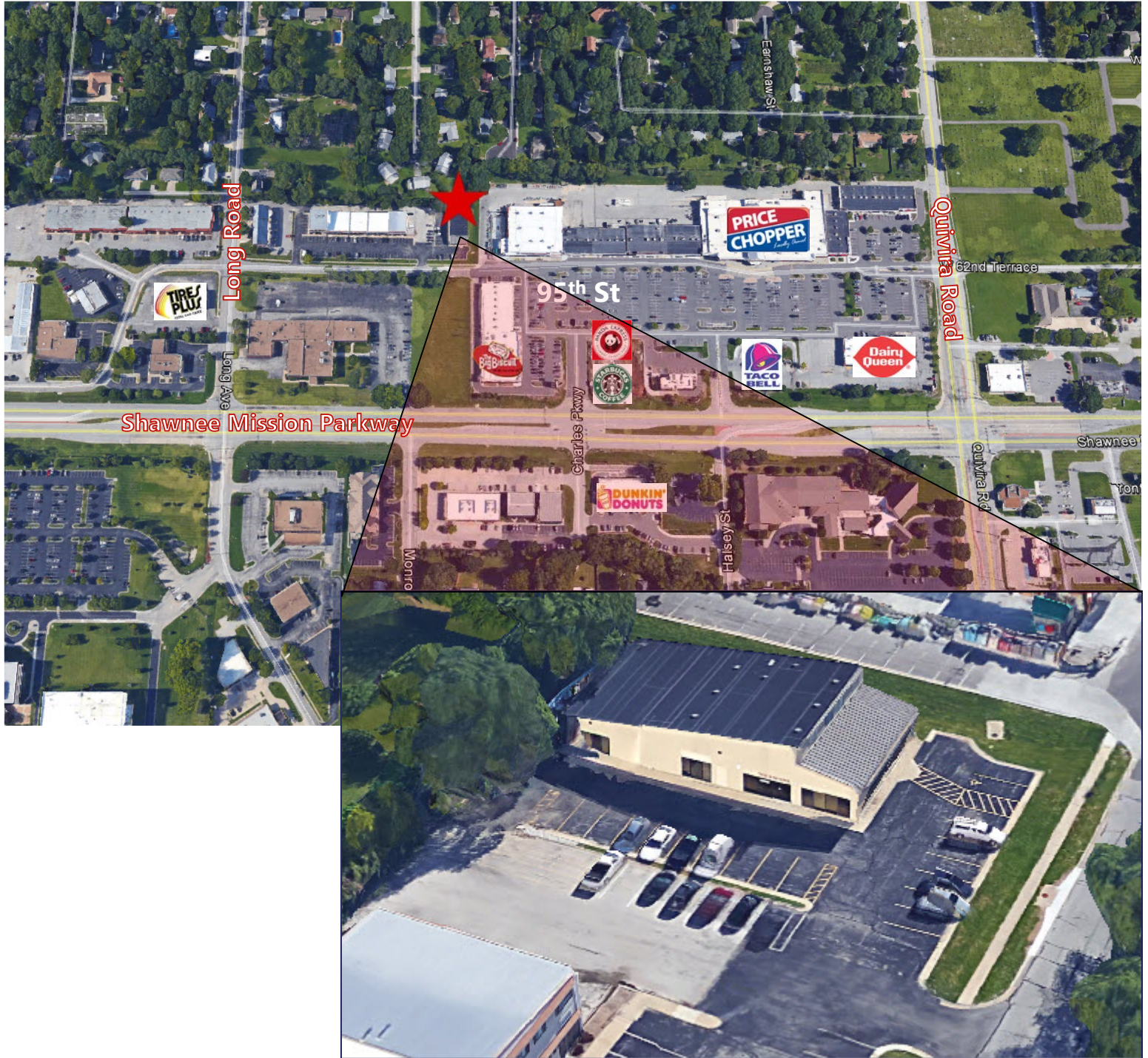


12310 W. 62nd TERRACE, SHAWNEE, KANSAS 66216

OFFICE/FLEX FOR SALE

KH

EST. 1879



For more information, please contact:

MATTHEW SEVERNS, SIOR, CCIM

Industrial Brokerage

816.936.8543

mseverns@kessingerhunter.com