

11555 W. 83RD TERRACE

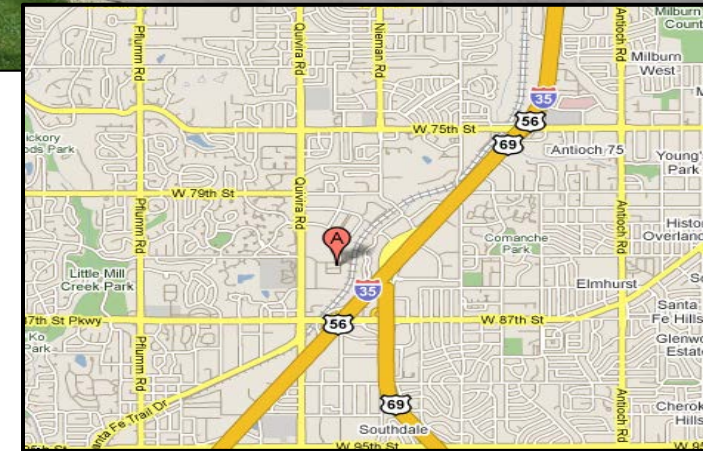
LENEXA, KANSAS 66214

INDUSTRIAL SPACE FOR LEASE | 5,212± – 10,424± SF

QUIVIRA BUSINESS PARK

PROPERTY FEATURES

- Attractive Business Park Setting
- Very Nice Office/Showroom Build Out
- Convenient Access to I-35
- Zoned BP-2 (Business Park)
- Built in 1981
- 14'4" Clear Height
- Three Dock-High Doors | 1 Ramped Drive In
- 200 Amp | 120/208 Volt | 3 Phase Power



ADDITIONAL INFO

PREMISES	5,212± - 10,424± SF with 4,000± SF of Office Space
LEASE RATE	\$5.95 PSF Net \$1.62 PSF Taxes, \$0.08 PSF Insurance, \$0.97 PSF CAM

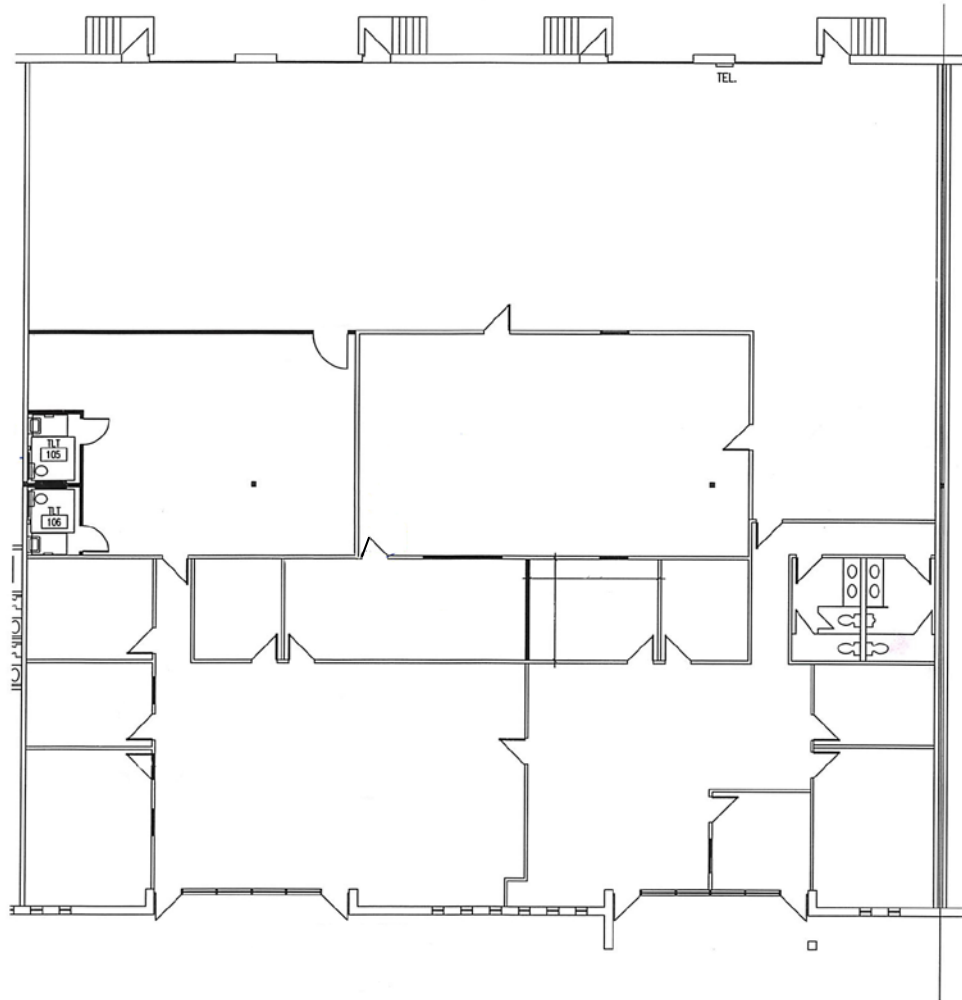
For more information, please contact:

MATTHEW SEVERNS, CCIM
Industrial Brokerage
816.936.8543 direct
mseverns@kessingerhunter.com

KESSINGER/HUNTER & COMPANY, LC
2600 Grand Boulevard, Suite 700
Kansas City, MO 64108
816.842.2690
www.kessingerhunter.com

11555 W. 83RD TERRACE, LENEXA, KANSAS 66214

Industrial Space for Lease



For more information, please contact:

MATTHEW SEVERNS, CCIM
Industrial Brokerage
816.936.8543 direct
mseverns@kessingerhunter.com

KESSINGER/HUNTER & COMPANY, LC
2600 Grand Boulevard, Suite 700
Kansas City, MO 64108
816.842.2690
www.kessingerhunter.com