

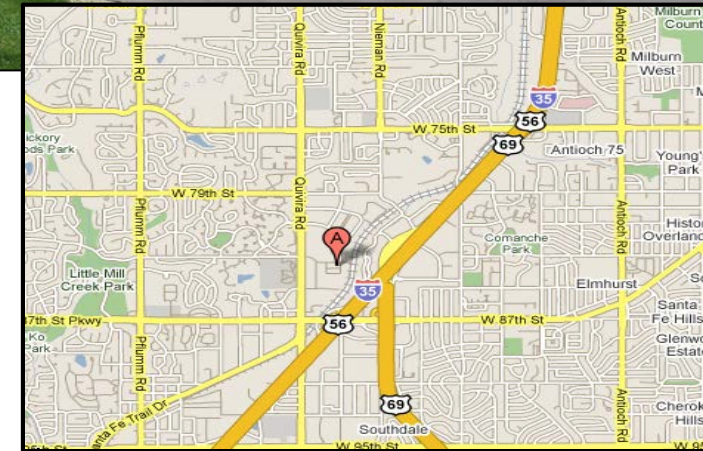
11539 W. 83RD TERRACE
LENEXA, KANSAS 66214

INDUSTRIAL SPACE FOR LEASE | 5,212± SF

QUIVIRA BUSINESS PARK

PROPERTY FEATURES

- 100% Air-Conditioned
- Very Nice Office/Production Space
- Convenient Access to I-35
- Zoned BP-2 (Business Park)
- Built in 1981
- 14'4" Clear Height
- 2 Dock-High Doors
- 400 Amp | 120/208 Volt | 3 Phase Power



ADDITIONAL INFO

PREMISES	5,212± SF with 2,000± SF of Office Space
LEASE RATE	\$6.75 PSF Net \$1.40 PSF Taxes, \$0.13 PSF Insurance, \$1.04 PSF CAM
AVAILABLE	Immediately

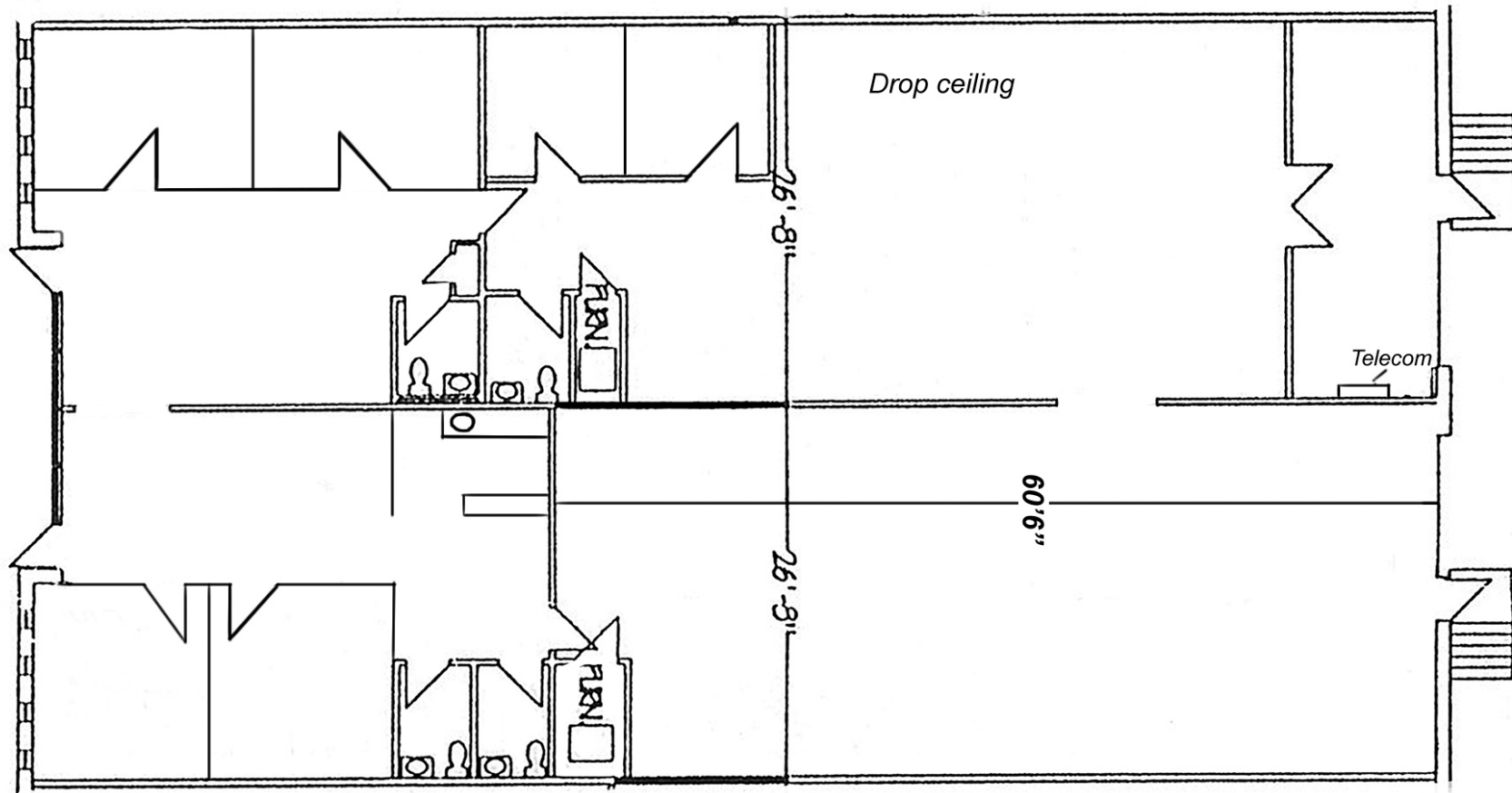
For more information, please contact:

MATTHEW SEVERNS, CCIM
Industrial Brokerage
816.936.8543 direct
mseverns@kessingerhunter.com

KESSINGER/HUNTER & COMPANY, LC
2600 Grand Boulevard, Suite 700
Kansas City, MO 64108
816.842.2690
www.kessingerhunter.com

11539 W. 83RD TERRACE, LENEXA, KANSAS 66214

Industrial Space for Lease



For more information, please contact:

MATTHEW SEVERNS, CCIM
Industrial Brokerage
816.936.8543 direct
mseverns@kessingerhunter.com

KESSINGER/HUNTER & COMPANY, LC
2600 Grand Boulevard, Suite 700
Kansas City, MO 64108
816.842.2690
www.kessingerhunter.com

Information subject to verification and no liability for errors or omissions is assumed. Price subject to change.
To unsubscribe, please click on the link: khlistings@kessingerhunter.com